

# MANISCOPIC

# MLT 523

Turbo MU

- Lift Capacity: 5,000 lb.
- Maximum Lift Height: 16 ft. 2 in.
- Maximum Forward Reach: 9 ft. 7 in.
- Kubota 75 HP Turbo Tier III Engine
- Hydrostatic Transmission
- Four Wheel Drive
- Three Steering Modes
- JSM Joystick - an all-in-one system



# MANITOU

# MLT 523 Turbo MU



## Lift Capacity:

Maximum (24 in. load center) .....5,000 lb.  
 Tipping load at maximum reach.....3,384 lb.  
 Break out force on bucket teeth  
 with tilting ram (ISO 8313) .....10,745 lbf.



## Lift Height:

Maximum lift height.....16 ft. 2 in.  
 Maximum forward reach .....9 ft. 7 in.  
 Times: unladen / loaded (in sec)  
 Lifting .....6.0/6.7  
 Lowering .....4.0/4.0  
 Boom extension .....4.5/4.6  
 Boom retraction .....3.0/2.4



## Tires:

.....12.5/80 x 18 SGI 10PR



## Brakes:

.....Hydraulic with oil immersed discs on front axle



## Engine:

Type .....V3307 DT-T Kubota Turbo Diesel  
 Horsepower.....75  
 Displacement .....4 cyl. 203 cu.in.  
 Maximum Torque .....215 lbf-ft at 1400 rpm  
 Injection .....Direct  
 Cooling .....Water



## Transmission:

Type .....Hydrostatic  
 Electro-hydraulic reversing shift  
 Speeds forward/reverse.....1/1  
 Maximum travel speed .....17 mph



## Hydraulics:

Pump .....Gear type  
 Flow .....3770 PSI - 24 gpm  
 Flow divider with priority to steering and braking



## Capacities:

Cooling system.....6.3 gal.  
 Engine oil .....3 gal.  
 Hydraulic fluid .....32.5 gal.  
 Fuel tank .....25 gal.

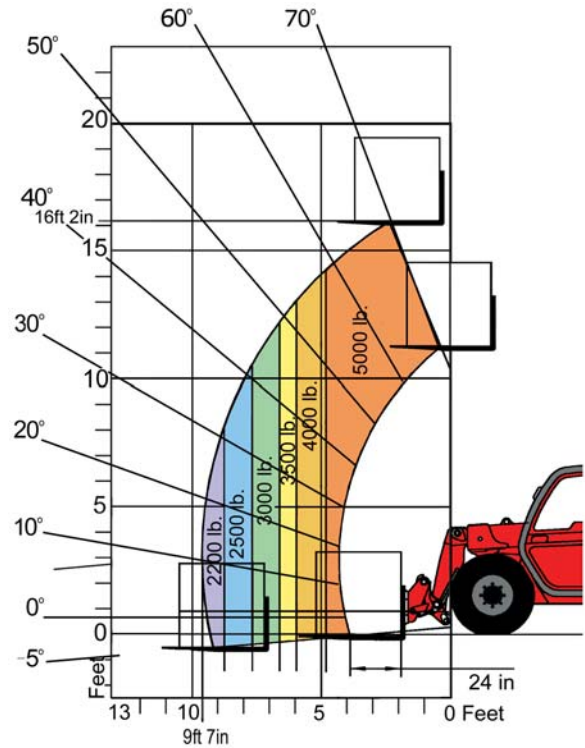


## Specifications:

Weight (base unit) .....10,913 lb.  
 Turning radius (outside wheels).....10 ft. 2 in.  
 Overall height.....6 ft. 7 in.  
 Overall width .....5 ft. 11 in.  
 Overall length (without forks).....13 ft. 10 in.  
 Ground clearance .....12 in.  
 Maximum drawbar pull .....7,418 lbf.

## LOAD CAPACITY CHART

CALCULATED WITH OPTIONAL 48" CARRIAGE AND 48" FORKS  
 (OPTIONAL ATTACHMENTS CAN DERATE THIS CHART)



Capacities shown in pounds/feet are the maximum recommended load limits at the indicated extensions of the boom. Capacity ratings are based on a 48" homogeneous cube and are in accordance with ANSI/ASME B56.6 stability standards. Capacity reductions must be made for extended load centers and when used with various other attachments, contact MANITOU NORTH AMERICA, INC.

## DIMENSIONS:

A	.....*	L	.....*
B	.....87	N	.....56
C	.....43	O	.....*
C <sub>1</sub>	.....40	P <sub>2</sub>	.....39°
D	.....166	P <sub>3</sub>	.....31°
D <sub>1</sub>	.....163	R	.....116
D <sub>2</sub>	.....141	S	.....255
E	.....213	T	.....128
F	.....59	U <sub>1</sub>	.....79
F <sub>1</sub>	.....59	U <sub>2</sub>	.....91
G	.....12	V	.....161
G <sub>1</sub>	.....14	V <sub>1</sub>	.....43
G <sub>2</sub>	.....13	V <sub>2</sub>	.....122
I	.....36	W	.....71
J	.....34	Y	.....12°
K	.....*	Z	.....120°

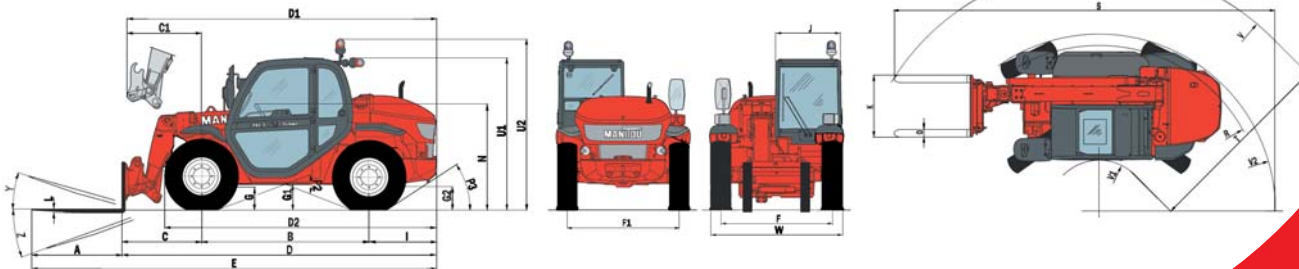
\*varies with option

## STANDARD EQUIPMENT:

- Enclosed Cab with Suspension Seat
- Hydraulic Power Steering
- Three Steering Modes
- Full Time 4 Wheel Drive
- Limited Slip Front Axle
- Full Instrumentation
- Road Lights
- Front & Rear Worklights
- Sun Visor
- Horn
- Backup Alarm
- Quick Fit Tool System
- Outer Planetary Hubs
- Inboard Wet Disc Brakes
- Automatic Attachment Leveling
- Auxiliary Boom Hydraulics
- Left & Right Side Mirrors
- Neutral Start Switch
- Tow Pin

## OPTIONAL EQUIPMENT:

- A wide variety of attachments and options are available to meet the customer's individual applications



Dealer:



MANITOU NORTH AMERICA, INC. - P.O. Box 21386 - Waco, TX 76702-1386  
 Tel: 800-433-3304 - Fax: 254-799-4433 - www.manitou-na.com