

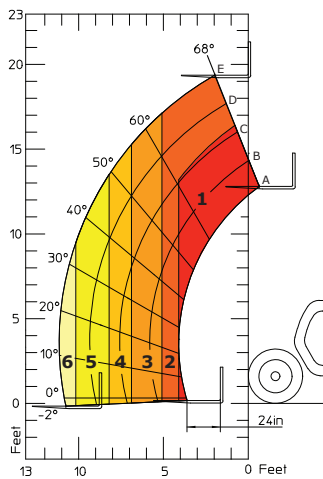


# MLT 625

**MLT SERIES** AGRICULTURAL/MULTI-PURPOSE telescopic handlers



## MLT 625 LOAD CHART



1. 5,500 lbs. (2495 kg)
2. 4,400 lbs. (1996 kg)
3. 3,300 lbs. (1497 kg)
4. 2,650 lbs. (1202 kg)
5. 2,000 lbs. (907 kg)
6. 1,650 lbs. (748 kg)

## STANDARD & OPTIONAL FEATURES

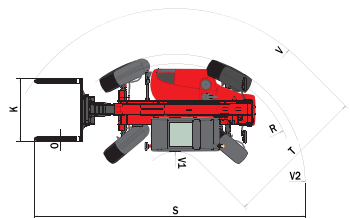
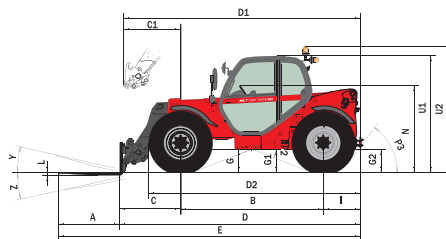
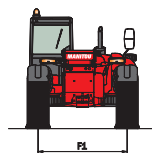
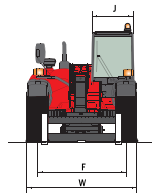
Enclosed Cab with Air Conditioning and Adjustable Seat	●
Hydraulic Power Steering	●
Three Steering Modes	●
Full-Time 4-Wheel Drive	●
Limited Slip Front Axle	●
Outer Planetary Hubs	●
Hydraulic Oil Cooler	●
Auto-Cleaning Reversible Fan	●
Full Instrumentation	●
Road Lights, Horn & Backup Alarm	●
Parking Brake and Inboard Wet Disc Brakes	●
Quick-Fit Tool System	●
Automatic Attachment Leveling	●
Hydraulic Holding Valves	●
Left & Right Side Mirrors / Front & Rear Work Lights	●
Front, Rear & Roof Wipers	●
Hood Screen Trash Shroud	●
Neutral Start Switch	●
Tow Pin	●

● Standard ○ Optional

## DIMENSION REFERENCE DIAGRAMS

A	48" (1200)	L	1.75" (45)
B	90" (2300)	N	55" (1398)
C	39" (991)	O	5" (125)
C1	36" (928)	P2	45°
D	153" (3894)	P3	65°
D1	151" (3831)	R	119" (3033)
D2	133" (3393)	S	257" (6531)
E	200" (5094)	T	137" (3475)
F	59" (1500)	U1	78.7" (2000)
F1	59" (1500)	U2	85" (2167)
G	15" (378)	V	167" (4240)
G1	NA	V1	30" (765)
G2	NA	V2	126" (3190)
I	24" (603)	W	71" (1819)
J	31" (797)	Y	12°
K	40" (1015)	Z	117°

(mm)



## MLT 625 TELESCOPIC HANDLER SPECIFICATIONS

MLT 625			
	LIFTING CAPACITY	Maximum Lift Capacity – 24" Load Center (kg)	5500 lbs. (2495)
		Capacity at Maximum Reach (kg)	1650 lbs. (748)
		Breakout Force on Bucket Teeth – Tilting Ram <sup>1</sup> (kN)	9453 lbf. (42)
	LIFT HEIGHT	Maximum Lift Height (mm)	19'3" (5867)
		Maximum Forward Reach (mm)	11'1" (3378)
		Cycle Times – Unloaded / Loaded	
		Lifting	7.2 / 7.5 sec.
		Lowering	4.9 / 5.0 sec.
		Boom Extension	5.2 / 5.3 sec.
	Boom Retraction	3.7 / 3.8 sec.	
	ENGINE	Type	Kubota V3307-DI-T-E3B
		Power (kW)	75 hp (55.4)
		Displacement (cm <sup>3</sup> )	4 cyl. 201 cu.in. (3294)
		Maximum Torque @ 1400 rpm (Nm)	196 ft.lbs. (266)
		Injection / Cooling	Direct / Water
	TRANSMISSION	Type	Hydrostatic
		Electro-Hydraulic Reversing Shift Speeds <i>Forward / Reverse</i>	2 / 2
		Maximum Travel Speed (km/hr)	16 mph (25.7)
	HYDRAULICS	Pump Type	Gear Pump
		Pressure (bar)	3408 psi (235)
		Flow Rate (L/min.)	24 gpm (91)
	CAPACITIES	Hydraulic Oil (L)	30.4 gal. (115)
		Fuel Tank (L)	16.6 gal. (63)
		Cooling System (L)	3.2 gal. (12)
	SPECIFICATIONS	Weight – with Forks (kg)	10,850 lbs. (4921)
		Turning Radius – Outside Wheels (mm)	10'6" (3190)
		Overall Height (mm)	6'7" (2000)
		Overall Width (mm)	5'11" (1819)
		Overall Length – Outside Wheel (mm)	12'7" (3831)
		Ground Clearance (mm)	15" (378)
		Carriage Rotation	129°
	Maximum Drawbar Pull (kN)	5924 lbf. (26)	
	TIRES		12.0-18 12 PR

<sup>1</sup> Per Standard ISO 8313-1986

This publication in no way constitutes an offer and the company reserves the right to alter specifications without notice.



MANITOU AMERICAS, INC. • PO Box 179 • West Bend, WI 53095

Tel: 262-334-9461 • Fax: 262-338-7517 • www.us.manitou.com

©2011 Manitou Americas, Inc. Manitou. All rights reserved. Printed in the U.S.A.

102011-MLT625